

A

B

C

D

A

B

C

D

1UF AT BOTTOM, AT VDD PIN TO DAP
0.1UF AT TOP, CLOSE TO VDD PIN

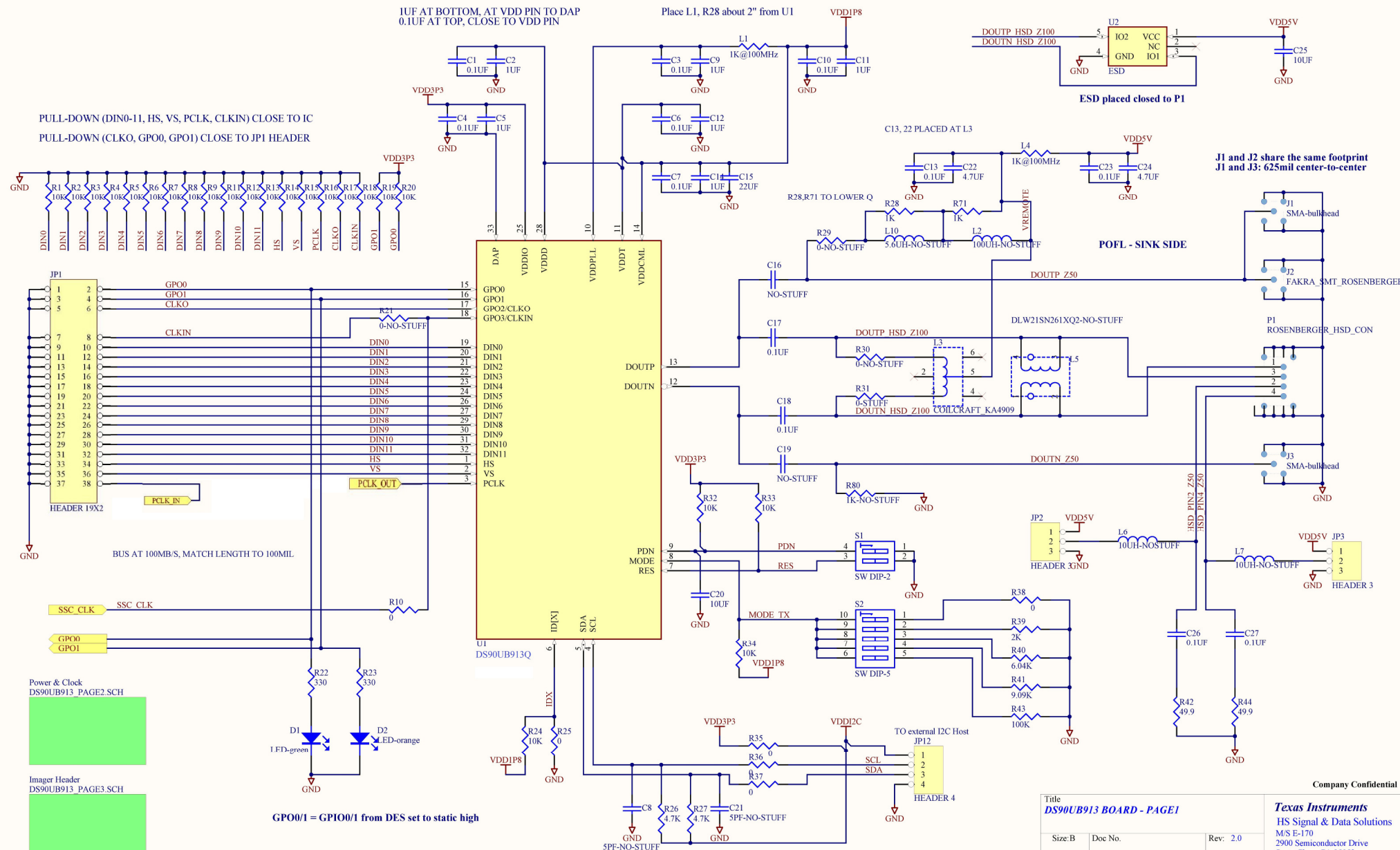
Place L1, R28 about 2" from U1

ESD placed close to P1

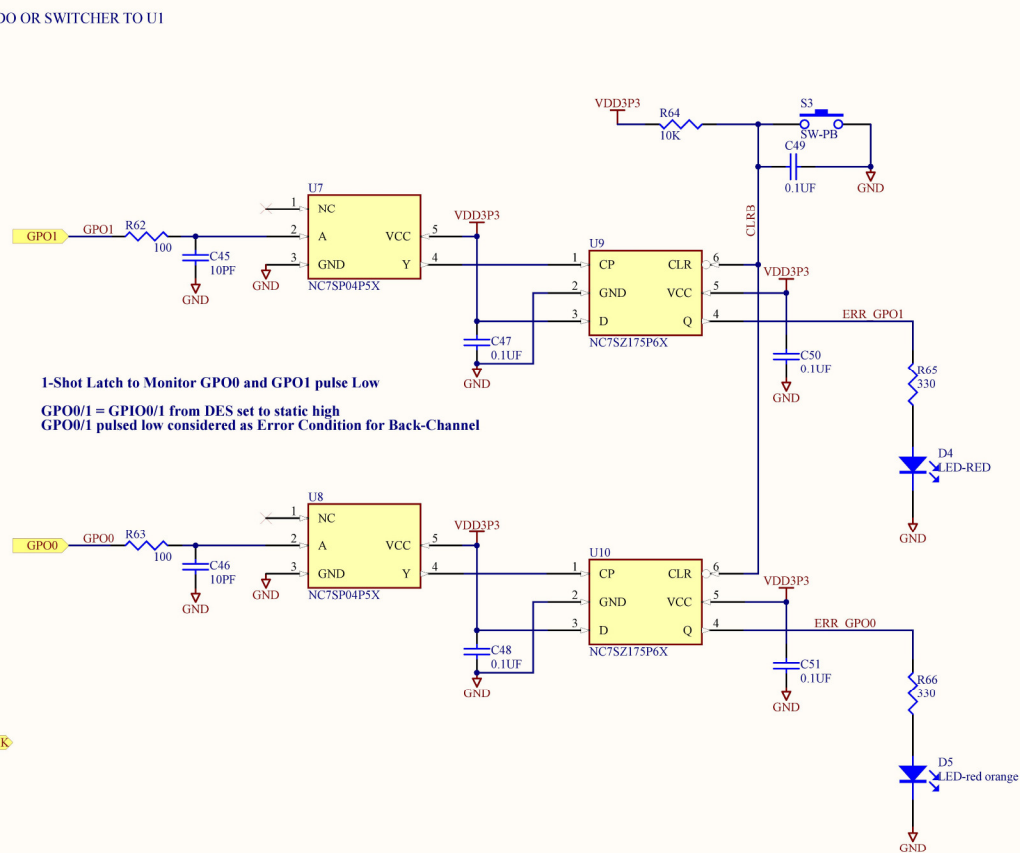
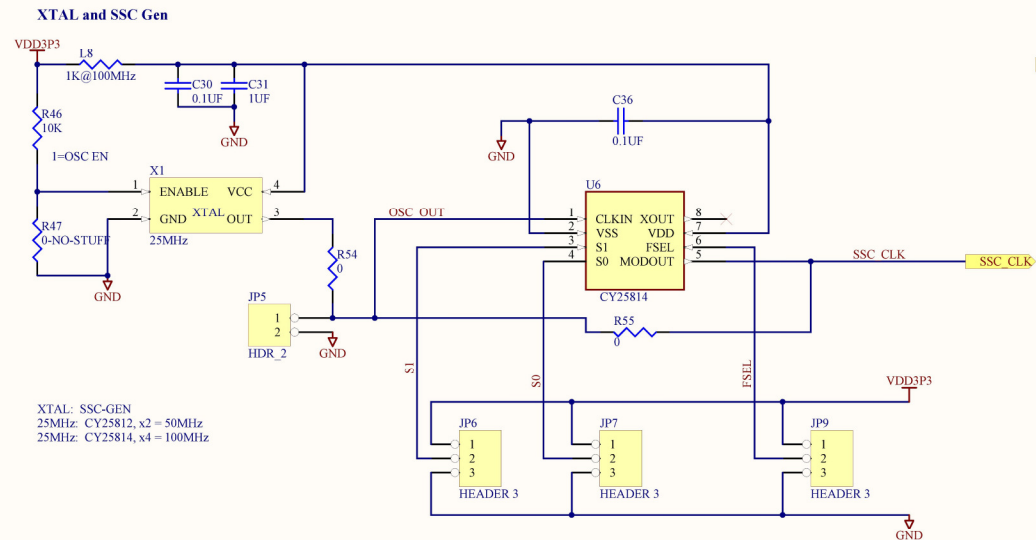
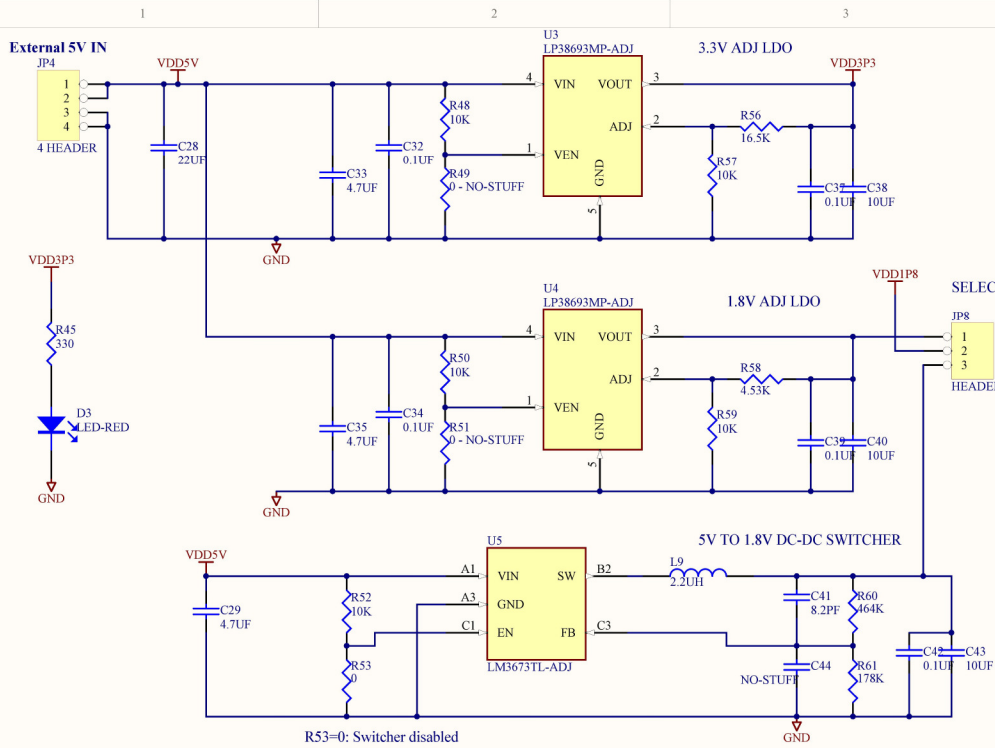
J1 and J2 share the same footprint
J1 and J3: 625mil center-to-center

POFL - SINK SIDE

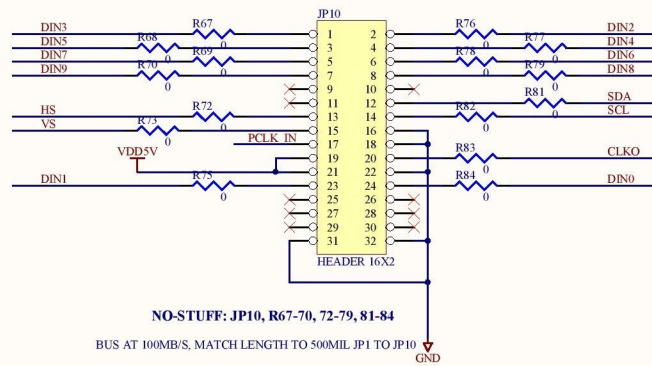
GPO0/I = GPIO0/I from DES set to static high



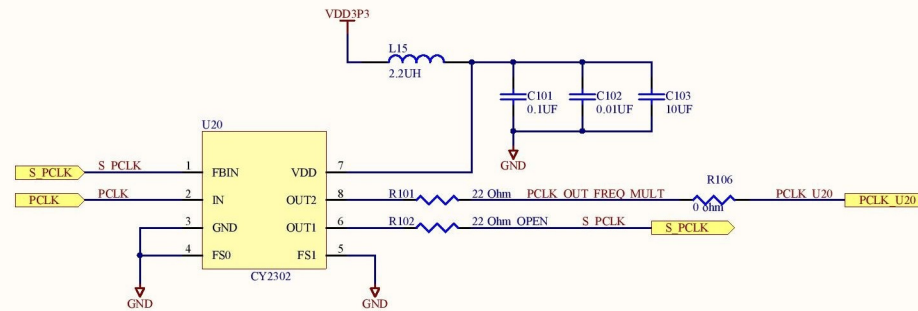
Title			Company Confidential	
DS90UB913 BOARD - PAGE1			Texas Instruments	
			HS Signal & Data Solutions	
			M/S E-170	
			2900 Semiconductor Drive	
			Santa Clara, CA 95052	
			Tel: 408-721-6883	
File: C:\Documents and Settings\CD\AJSC\Desktop\DS90UB913.Sch				
Size: B	Doc No.	Rev: 2.0		
Print Date: 1/9/2013	Sheet 1	of 3		



Header to External Imager



Layout Note: R104 Closer to JP10 pin 17 ,



Company Confidential

Title Header Adaptor to Imager			Texas Instruments HS Signal & Data Solutions M/S E-170 2900 Semiconductor Drive Santa Clara, CA 95052 Tel: 408-721-6883		
Size: B	Doc No.	Rev: 2.0			
Print Date: 1/18/2013	Sheet 3	of 3	File: E:\altnum jobs\TNSC 913-914\913\01-18-2013\DS90UB913 DEMO BOARD REV3 01-18-2013\DS90UB913		